



AR-32

Architectural Recorder System



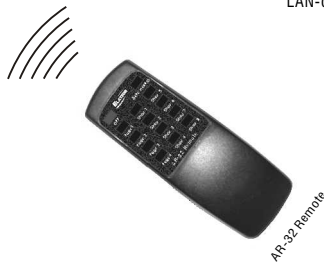
AR-32C
ARCHI RECORDER
(Controller)



AR-32P
ARCHI RECORDER
(Junction Box)



LAN-cable (RJ-45)



AR-32 Remote

User's Manual

BOM:24-004-1953-00
Manual Version:1.2
Software Version:2.04

Elation Professional ©
4295 Charter Street
Los Angeles CA. 90058
www.elationlighting.com

Table of Contents

AR-32C Page1~Page3

AR-32P Page4

AR32 Configuration Software Operating Guide
Page5~Page10

About AR-32 Architecture Recorder System

Introduction:

Thank you for your purchasing the Elation Professional AR 32-Architectural Recorder System. To optimize the performance of this product, please read these operating instructions carefully to familiarize yourself with the basic operation of this system. The Elation AR-32 is simple to use, architecture recorder system. All system components have been tested at the factory before being shipped to you. Please simply connect the LAN-cable between your AR-32C and AR-32P, then you're ready to go!

Unpacking:

The AR-32 has been thoroughly tested and shipped in perfect working condition. Please take a few minutes to carefully inspect the system carton for damage that may have occurred during shipping. If the carton appears to be damaged, carefully inspect each system component for damage, in the case that damage is found, please contact our toll free customer support number, listed below, for further instructions. The AR-32 system carton should includes the following:

- 1 AR-32C
- 1 AR-32P
- 1 AR-32 Remote
- 1 LAN-cable(RJ-45)
- 1 User's Manual

Customer Support:

Elation provides a toll free customer support line, to provide set up help and to answer any question should you encounter problems during you set up or initial operation. You may also visit us on the web at www.elationlighting.com for any comments or suggestions.

Service Hours are Monday through Friday 8:00 a.m. To 5:00 p.m. Pacific Standard Time.

Voice:(800) 322-6337

Fax:(323) 582-2610

E-mail: support@elationlighting.com

Caution!

There are no user serviceable parts inside this unit. Do not attempt any repairs yourself, doing so will void your manufactures warranty. In the unlikely event your unit may require service, please contact your nearest Elation dealer.

Do not discard this carton in the trash, please recycle when ever possible.

Upon unpacking, carefully inspect your unit for any damage that any have occurred during shipping.

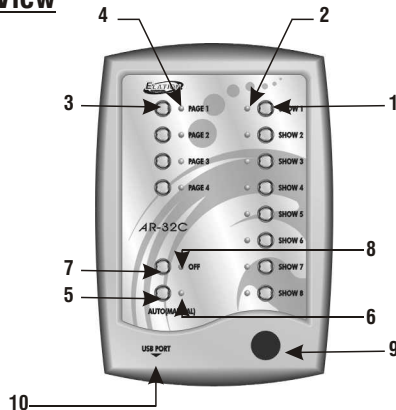
If damage may have occurred, do not plug the unit in, please contact your dealer as soon as possible.

About AR-32C

Main Features

- Wall mounting & free standing available.
- With USB port to communication with PC for linking use
- Real time triggering your desired shows individually.
- Up to 248 files but not over 128M recorded in memory to control DMX signal files.
- Ability of up to 32 shows are available to be configured separately by performing AR32 configuration software on PC.
- DMX Controlling Mode and Time Trigger Mode and Manual Mode available for playback shows.
- Infrared Remote functions (AR-32 Remote included).
- Power Failure Memory.

Product Complete View



1.SHOW1~8 buttons: To playback Show1-8 in the relative page which you wish to playback shows in Manual Mode.

2.SHOW Indicators: To indicate the corresponding SHOW activity and state, its indicator will illuminate in the Manual Mode when the selected show is engaged.

3.PAGE1~4 buttons: To access your desired pages which you wish to playback your desired shows.

4.PAGE Indicators: Its indicator will illuminate when your desired page is engaged.

5.AUTO/MANUAL button: Access to Auto or Manual function mode.

6.AUTO/MANUAL Indicator: The red indicator indicates the Auto function mode has been engaged currently and the blue one for the Manual function mode.

7.OFF button: To close the current Show in Manual function mode.

8.OFF Indicator: The desired show has been closed when OFF indicator illuminates.

9.Infrared Sensor: To receive infrared remote signals.

10.USB Port: For communication to PC.

Operation on AR-32 Remote

1.Auto/Manual mode

Press and hold Auto/Manual button down for more 2 seconds to access Auto or Manual function mode. The red indicator indicates the Auto function mode is currently engaged and the blue one illuminates in the Manual function mode.

In Manual mode, user enable to close the current show by pressing and holding OFF button for more 2 seconds until its indicator illuminates.

In Manual Mode, Shows assignments in Pages may refer to the following table:

| | | | | | | | | |
|---------|--------|--------|--------|--------|--------|--------|--------|--------|
| Objects | SHOW1 | SHOW2 | SHOW3 | SHOW4 | SHOW5 | SHOW6 | SHOW7 | SHOW8 |
| PAGE1 | SHOW1 | SHOW2 | SHOW3 | SHOW4 | SHOW5 | SHOW6 | SHOW7 | SHOW8 |
| PAGE2 | SHOW9 | SHOW10 | SHOW11 | SHOW12 | SHOW13 | SHOW14 | SHOW15 | SHOW16 |
| PAGE3 | SHOW17 | SHOW18 | SHOW19 | SHOW20 | SHOW21 | SHOW22 | SHOW23 | SHOW24 |
| PAGE4 | SHOW25 | SHOW26 | SHOW27 | SHOW28 | SHOW29 | SHOW30 | SHOW31 | SHOW32 |

2.Shows are available configured by performing AR-32 configuration software operations on PC and for further information, please refer to the next accompanying manual of "AR-32 Configuration Software Operation Guide".

3.User can use AR-32 Remote to control AR-32 Architectural Recorder System. These functions of push buttons on the panel of AR-32 Remote are same with ones of your AR-32C.

4.DMX Control Mode

In this mode, SHOWs are available to be controlled and playback by receiving initial DMX address via AR32 configuration software setting. And user may use DMX values to control the desired SHOWs. For further information, please refer to the accompanying table:

| DMX Channel | DMX Values |
|----------------------------|--|
| Starting Channel | 0~3 for triggering SHOW1, 4~7 for triggering SHOW2, 9~11 for triggering SHOW3,..... 124~127 for triggering SHOW32, Exceeding 128(> 128) for closing SHOW |
| Starting Channel+ 1 | Less than 80(<80) for accessing to PAUSE, 80~160 for accessing to PLAY, Not less than160(\geq160) for accessing to STOP |
| Starting Channel+ 2 | Less than 128(<128) for NORMAL OUTPUT, Not less than128(\geq128) for accessing to BLACKOUT |

About AR-32P

About AR-32P

This product of AR-32P ARCHI Recorder with DMX in & out interface, is a tension provider and a junction box in the AP-32 system, and can be used via a combination with AR-32C.

Warning

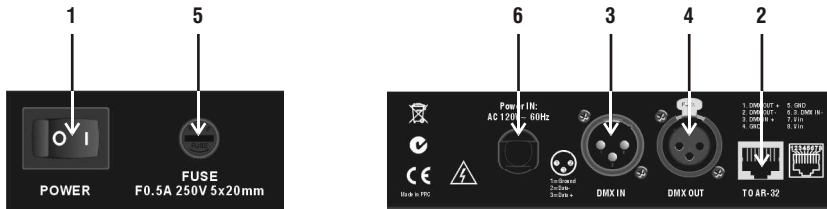
- 1.The ground connection should be so essential for this unit.
- 2.Keep the unit dry, do not expose it to water or high levels of humid.
- 3.Do not open this unit, there is no user serviceable part inside-**Risk Of Electric Shock!**
- 4.Turn off the power if not using this unit for a long time.
- 5.Any strong shocks or vibration may result in malfunction.
- 6.Do not attempt to dismantle or modify the unit.
- 7.This unit must only be operated by adults, do not allow children to play with it.

Caution!

When unpacking, please check the unit is not damaged. If something wrong has happened to this product, contact the local dealer immediately.

All rights reserved. No part of this manual included with this product can be reproduced or transmitted in any form, by any means for any purpose without authorized permission.

Product View



- 1.Power Switch:** To switch the unit power on or off.
- 2.RJ45 connector:** To connect with an AR-32C unit via this connector.
- 3.DMX IN (3-pin XLR connector):** This connector is used to receive DMX signal.
- 4.DMX OUT (3-pin XLR connector):** To feed the DMX signal to a DMX pack via this connector.
- 5.Fuse Protection:** F0.5A AC250V 5x20mm.
- 6.Power In:** To input AC 120V~60Hz main power via this connector.

Specifications:

Power input: AC120 -60Hz
Fuse: F0.5A 250V 5x20mm
Dimensions: 57x74x43mm
Weights: approx 0.2kg

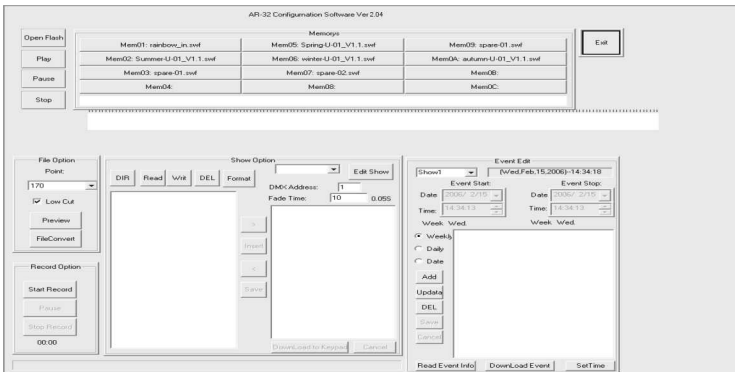
AR-32 Configuration Software Operating Guide

Introduction

AR-32 Configuration Software is professional configuration application software for AR-32 System with the built-in real time clock. Many functions enables to be configured for AR-32C through running this software via linking AR-32C on PC. Additionally, Manual Mode, DMX Control Mode and Time Trigger Mode are available to playback shows.

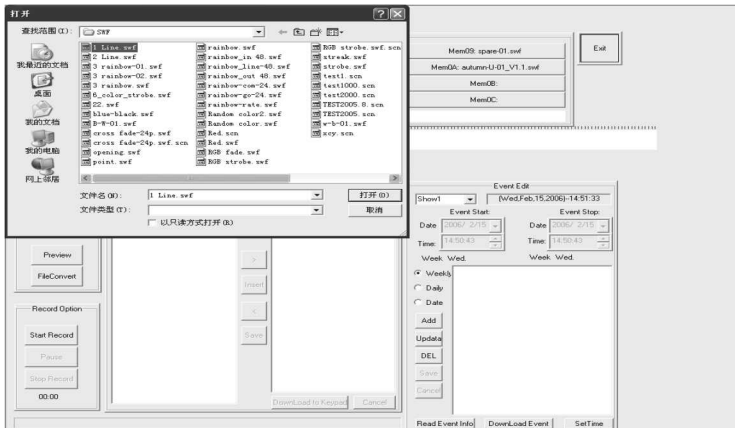
Getting started

In Windows, click the Start button and go to the "Programs" then "AR-32 Configuration Software". Move the pointer to the AR-32 Configuration Software icon, the AR-32 Configuration Software screen appears hereinafter:



1. Playing Flash Files:

In MEMO option, 12 different flash files icons will be used to play quickly. Move the pointer the desired icon and click the right key once, a dialogue box will appear on the screen.



- 1.1 Select your desired flash file with extension .swf and click "OPEN" icon, the selected file will be successfully linked with the icon in the MEMO option and the file name icon will also appear in the MEMO option.
- 1.2 And click the icon in the MEMO option to play the selected file. Additionally, you can play the selected file by pointing to the flash file after clicking the "OPEN FLASH" icon on the right upper.
- 1.3 And the flash effect will appear in the presentation bar. User can use these three icons to control the flash playing manually. And click the "Play" icon to play the flash, "Pause" icon to terminate and "Stop" icon to end.

2.FileOption Operation:

FileOption is used to control RGB lightings by adjusting contents of presentation bar. And up to 170 RGB lightings can be controlled.

- 2.1 "Fileconvert" icon used to convert the flash file with extension .swf into the file with extension .scn for AR-32C playing the one directly.

NOTE:

The "Fileconvert" icon will keep grey and user can see the process gauge are continually refreshed during being selected to convert the flash file. The "Fileconvert" icon will become black and the process gauge is empty after your desired flash file has successfully been converted into the file with extension .scn.

- 2.2 "Preview" icon is engaged to hold AR-32C to control RGB fixtures in real time by previewing flash file.

3.Record Option Operation:

In this option, "Start Record" icon used to start and record DMX signals via AR-32C input, "Pause" icon to terminate the record and "Stop" icon to end the record. And the segment digits under the "Stop" icon will show the record time for you.

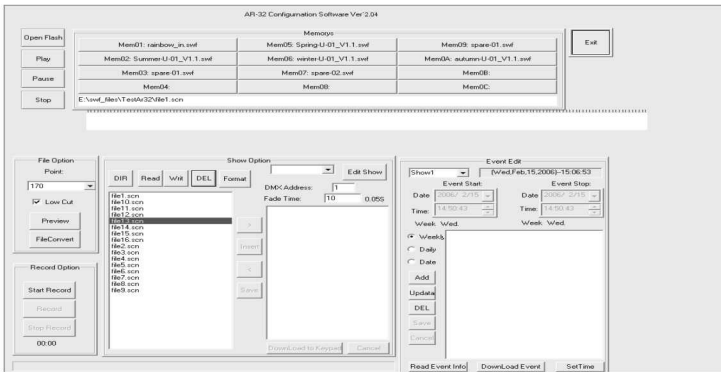
- 3.1 Click "Start Record" icon and select the desired file with extension .scn.
- 3.2 When user is preparing for recording DMX signal, click "Record" icon to record and the calculagraph will time.
- 3.3 User can stop timing by clicking "Pause" icon and end

4.Show Option Operation:

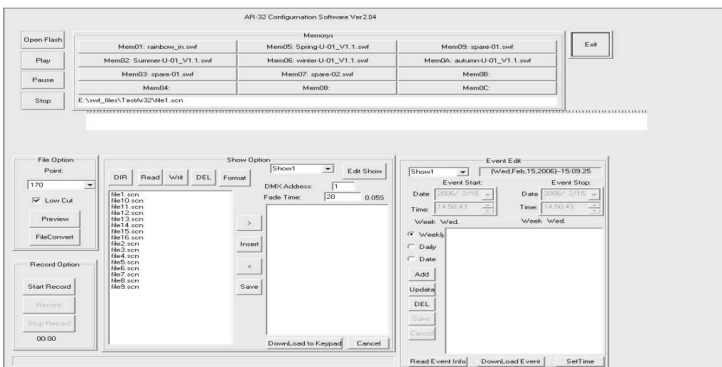
In the option, user can configure the SHOW in AR-32C.

- 4.1 "DIR" icon use to have files in AR-32C readout and list.
- 4.2 "Read" icon used to read pointed file in AR32.
- 4.3 "Write" icon used to write files with extension .scn into AR-32C.
- 4.4 "Del" icon used to delete pointed files in AR-32C.
- 4.5 "Format" icon used to clear up all files in AR-32C.
- 4.6 "Edit Show" icon used to start and edit the SHOW in AR-32C. It is necessary to click the "Edit Show" icon to readout SHOW in AR-32C before editing Show.

And hereinafter is before clicking "Edit Show" icon, the left bar of the icon is empty.



Hereinafter is the screen after clicking the icon.



4.7 User can set up DMX initial address for AR-32C receiving in DMX Address bar and Fade Time (through previous flash file to the next flash file), And use can also change these settings upon requirement. After some settings are satisfied, click "Download to Keypad" icon to download into your AR-32C.

4.8 How to Edit Show?

4.8.1 Clicking the DOWN Arrow of "Edit Show" icon to select your desired show.

4.8.2 Select the file in the left list and click ">" icon to add up pointed flash for the desired Show.

4.8.3 And repeat Step 4.8.2 to add up more files for your desired show.

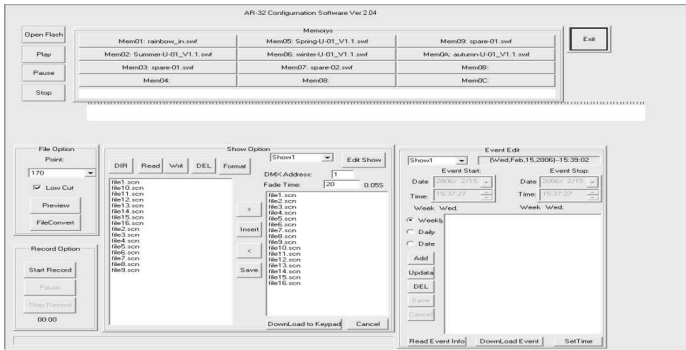
4.8.4 And user can delete your unwanted files in your desired show by clicking "<" icon.

4.8.5 Clicking the "Inset" icon to add up the same file for your desired show.

4.8.6 And clicking the "Save" icon to save your desired show in memory if you're satisfied with the settings.

4.8.7 And repeat Step 4.8.1 ~ 4.8.6 to edit other desired shows.

4.8.8 Finally, user can download edited shows into AR-32C by clicking the "Save All Shows" icon.



5.Event Edit Option:

In this option, user can access Time Trigger Mode for playing back SHOW by editing show events to AR-32C, including Weekly Mode, Daily Mode and Date Mode. Commonly, the Date Mode will take precedence of the Daily Mode, and the Daily Mode will take precedence of the Week Mode. For example,

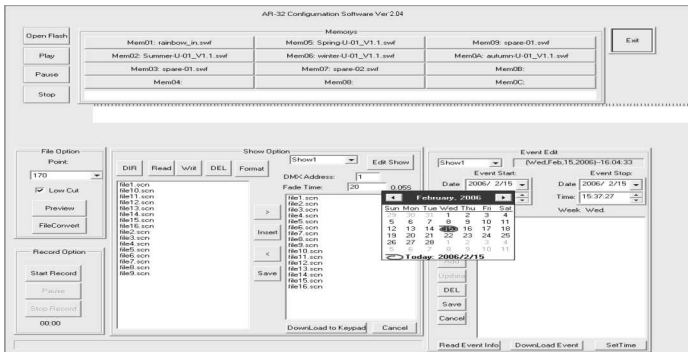
If you have set up three events(A1, A2 and A3) to be done within one day, and A1 will in the Date Mode, A2 in the Daily Mode, A3 in the Week Mode. So only A1 in the Date Mode will be performed but A2 and A3 will be not done with.

How to Edit show events?

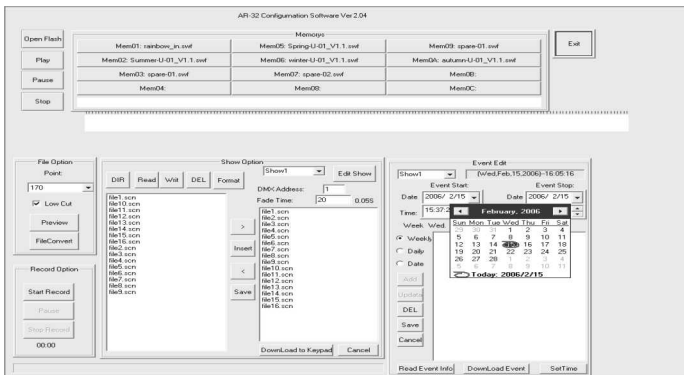
- 5.1 To select your desired time trigger modes.
- 5.2 And select your desired shows which you wish to playback.
- 5.3 Then click the "ADD" icon to edit the time.



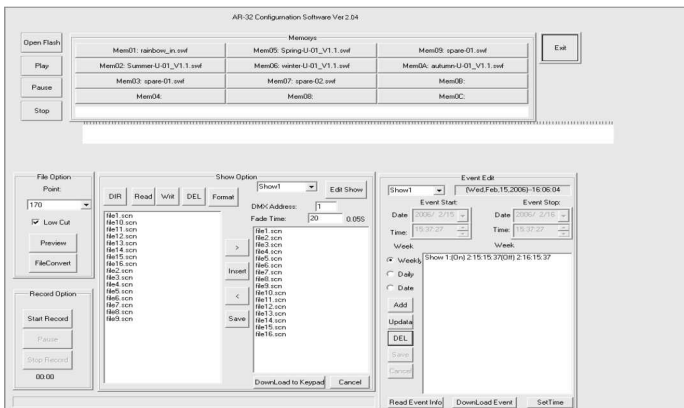
5.4 And click the Down Arrow under the "Event Start" icon to select the starting time to playback the desired show.



5.5 Then secondarily click the Down Arrow under the "Event Start" icon to select the ending time of playing back the desired SHOW.



5.6 And if you're satisfied with your settings, click the "Save" icon to save.



5.7 And repeat Step 5.1 ~ Step 5.6 to edit other shows events.

5.8 If you're satisfied with these settings, user can download edited shows events into your AR-32C by clicking the "Download Event" icon.

5.9 In like manner, user can readout these desired shows events in AR-32C and amend upon requirement.

5.10 And user want to update your AR-32C time by clicking the "Set Time" icon.

How to Exit the Software?

User can exit the software operation system by clicking the "EXIT" icon when the settings have been conformed.